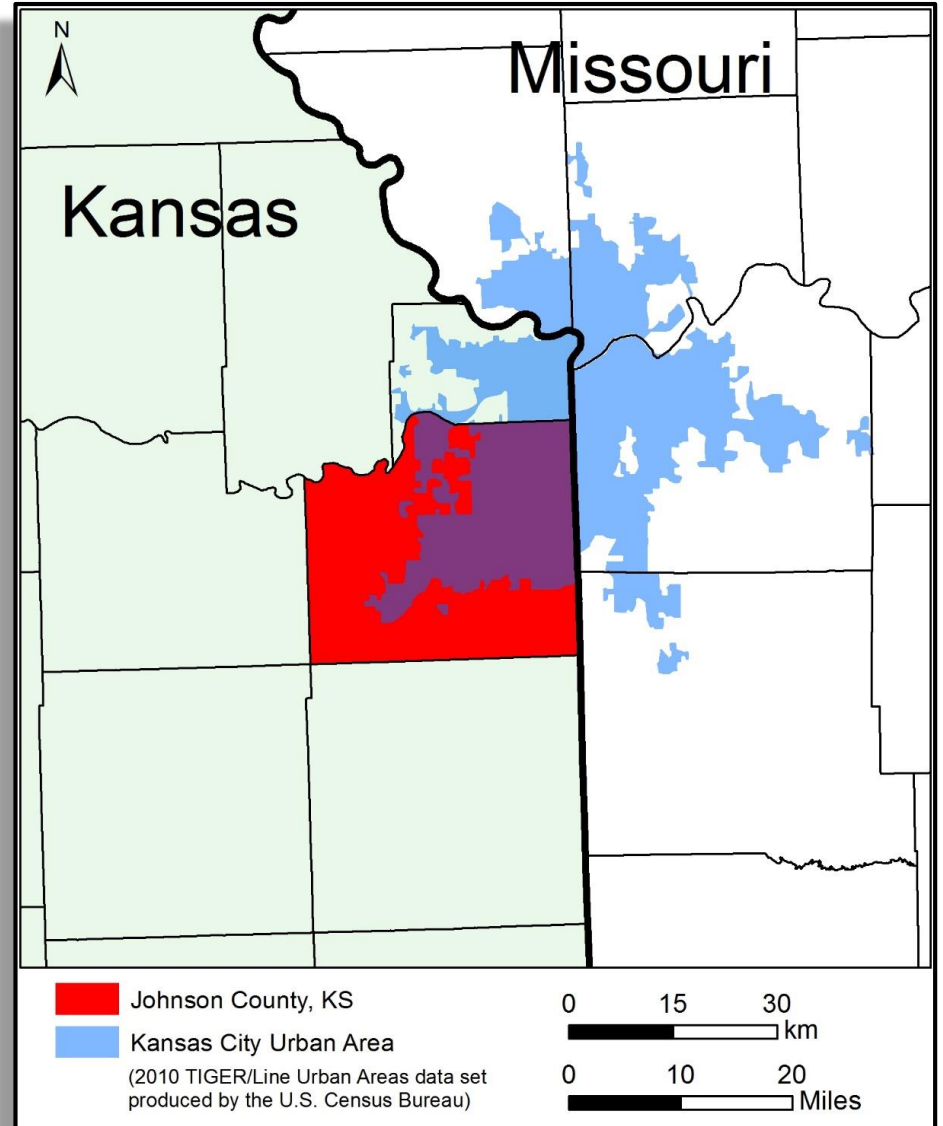
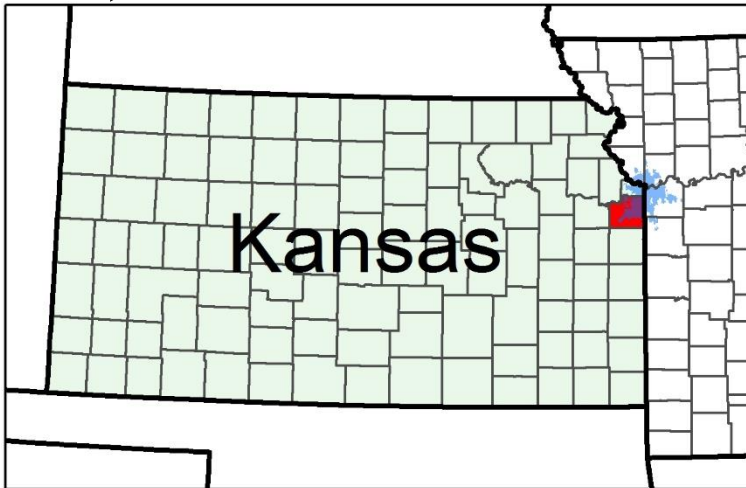
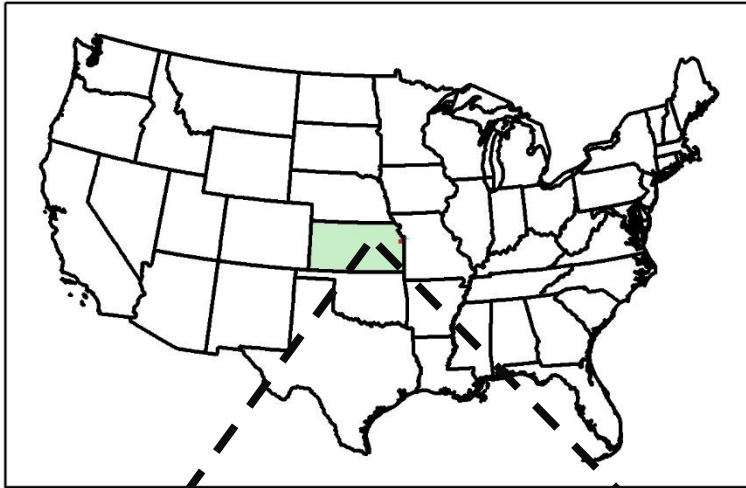


Coffee with a Co-Responder

Taylor Hopkins - NE Co-Responder
Kimberly Rowlands - Olathe Co-Responder
Megan Younger - Overland Park Co-Responder
Beth Egbert - Lenexa Co-Responder

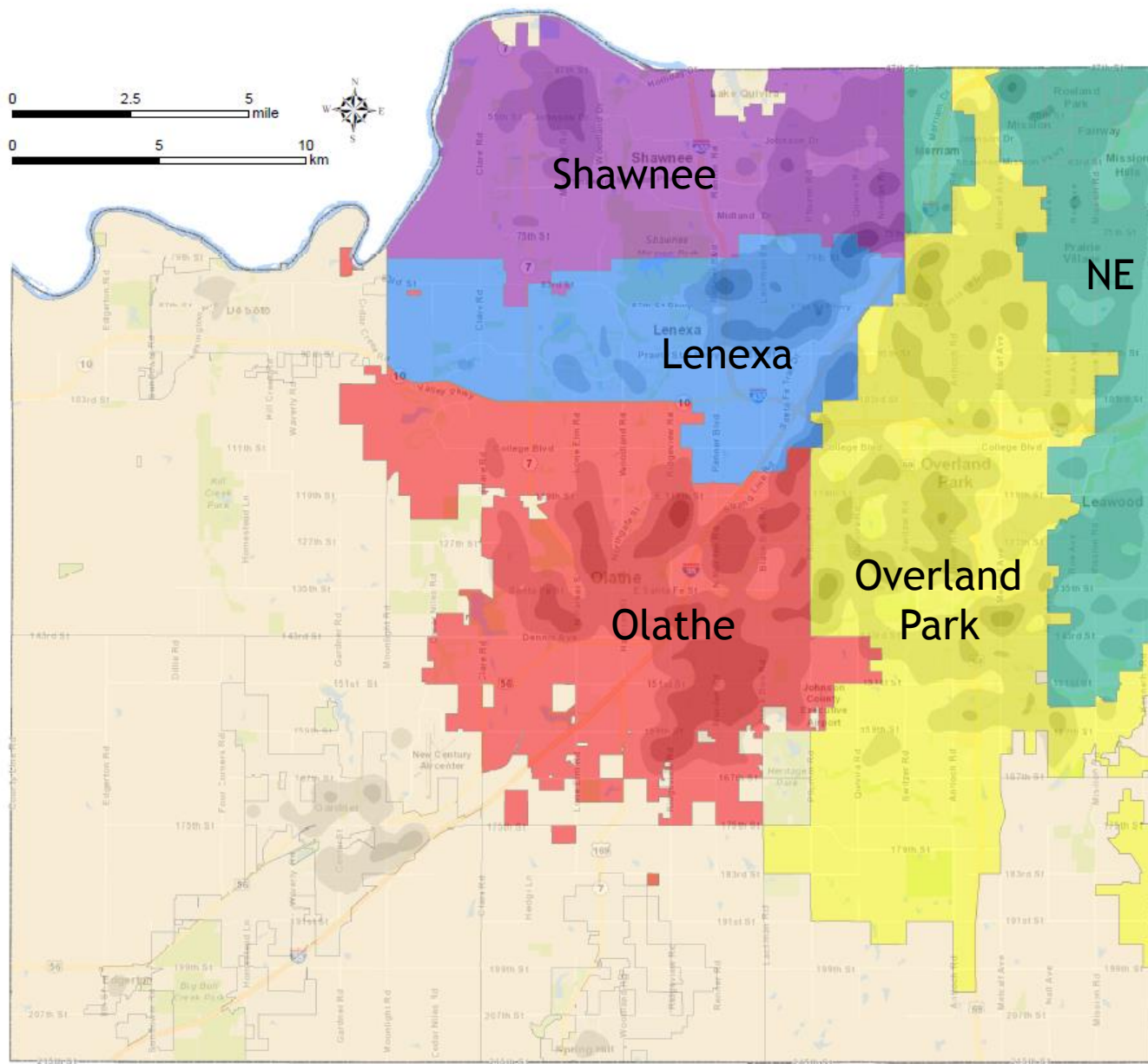
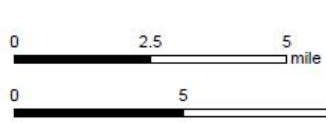


Johnson County, KS



Johnson County, KS Demographics

- **Size** = 477 square miles or approximately 303,000 acres
- **Population** = Johnson County is the most populous county in the state of Kansas at 580,159
- 20 cities
- **Urban land** = approximately 59% of Johnson County has been incorporated into city limits
- **Rural land** = approximately 41% of Johnson County remains unincorporated/rural areas
- **Hospitals** = 6
- **Law Enforcement Stations** = 17
- **Fire Stations** = 44
- **Paramedic/Med-Act Stations** = 20



Johnson County Co-Responder Map

2017 Data per City

- Overland Park, KS
 - Population size = 188,000
 - Overland Park PD mental health calls for service = 2,340
- Olathe, KS
 - Population size = 135,400
 - Olathe PD mental health calls for service = 1,947
- Northeast Cities of Johnson County, KS (Leawood, Prairie Village, Mission Hills, Merriam, Mission, Fairway, Westwood, Westwood Hills, Mission Woods, and Roeland Park)
 - Population size = 93,664
 - NE mental health calls for service = 739
- Shawnee, KS
 - Population size = 65,795
 - Shawnee PD mental health calls for service = 1,245
- Lenexa, KS
 - Population size = 52,000
 - Lenexa PD mental health calls for service = 850



Contact Information

OLATHE CRs

- Kimberly Rowlands: 913-927-7225
 - Kimberly.Rowlands@jocogov.org
- Jordyn Endicott: 913-337-2016
 - Jordyn.Endicott@jocogov.org

OVERLAND PARK CRs

- Megan Younger: 913-535-3283
 - Megan.younger@jocogov.org
- Leslie Ruggles: 913-669-3049
 - Leslie.ruggles@jocogov.org

Contact Information

NORTHEAST CR

- Taylor Hopkins: 913-326-3000
 - Taylor.Hopkins@jocogov.org

SHAWNEE CR

- Kate Coleman: 913-731-2467
 - Kate.coleman@jocogov.org

LENEXA CR

- Beth Egbert: 913-326-3002
 - Beth.Egbert@jocogov.org

Contact Information

EMS CR

- Selia Moya: 913-444-3808
– Selia.moya@jocogov.org

CR TEAM LEADER

- Jessica Murphy: 913-826-4010
– Jessica.murphy@jocogov.org